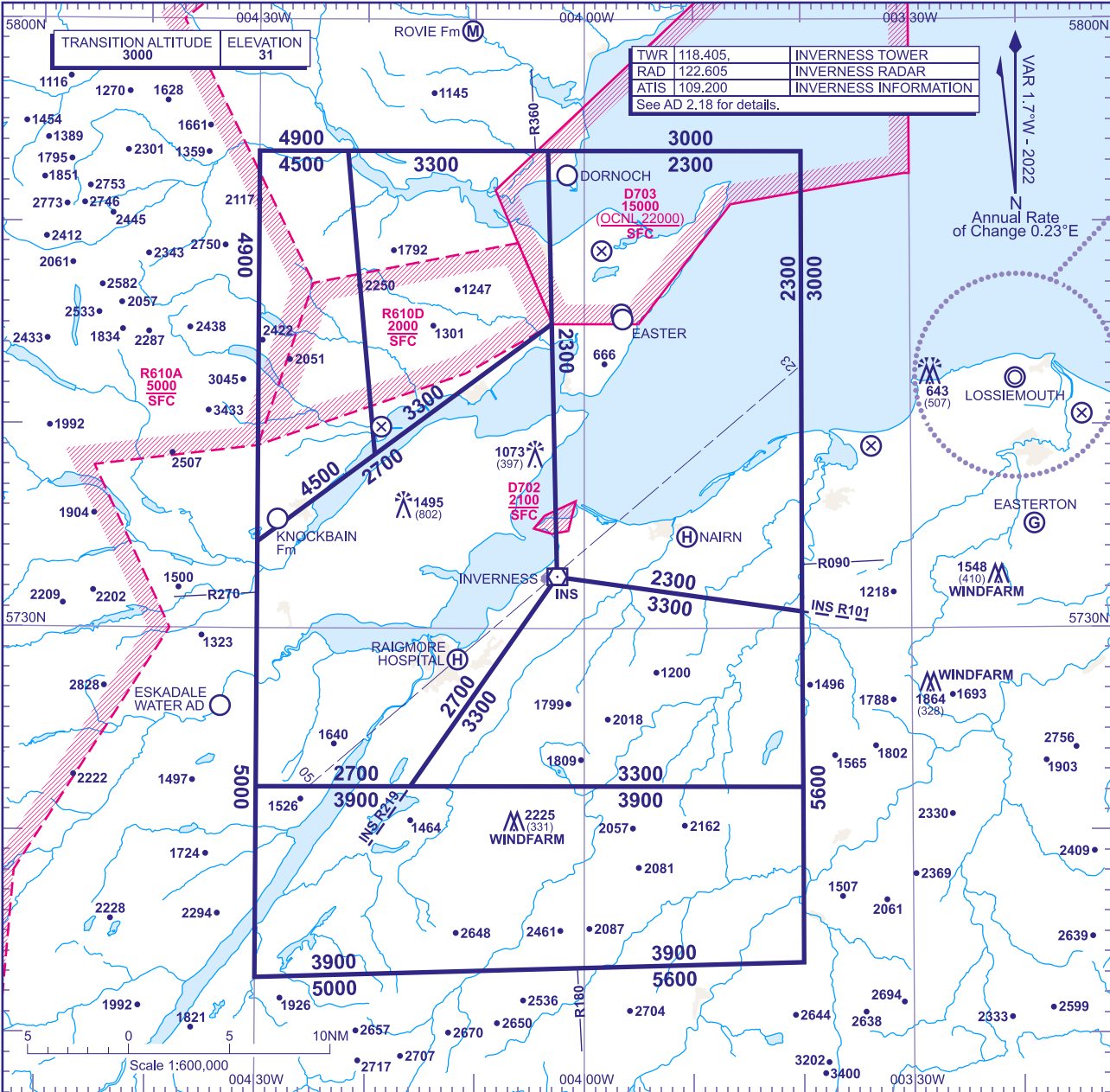


ATC SURVEILLANCE MINIMUM ALTITUDE CHART - ICAO

BEARINGS, TRACKS AND RADIALS ARE MAGNETIC
ELEVATIONS IN FEET AMSL 2232
HEIGHTS IN FEET AGL (331)

INVERNESS



- MINIMUM INITIAL ALTITUDE**
Within the ATC Surveillance Minimum Altitude area the minimum initial altitude to be allocated by the approach surveillance controller is:
- a) **2300** in the sector defined by the lateral limits; 575332N 0040321W - 575330N 0034000W - 573050N 0034003W - 573233N 0040230W - 575332N 0040321W.
 - b) **2700** in the sector defined by the lateral limits; 573416N 0043000W - 574500N 0040300W - 573233N 0040230W - 572213N 0041554W - 572211N 0043000W - 573416N 0043000W.
 - c) **3300** in the sector defined by the lateral limits; 573233N 0040230W - 573050N 0034003W - 572211N 0034000W - 572213N 0041554W - 573233N 0040230W.
 - d) **3900** in the sector defined by the lateral limits; 575331N 0042150W - 575332N 0040321W - 574500N 0040300W - 573834N 0041915W - 575331N 0042150W.
 - e) **3900** in the sector defined by the lateral limits; 572211N 0043000W - 572211N 0034000W - 571332N 0034000W - 571247N 0043000W - 572211N 0043000W.
 - f) **4500** in the sector defined by the lateral limits; 575330N 0043000W - 575331N 0042150W - 573834N 0041915W - 573416N 0043000W - 575330N 0043000W.

OUTSIDE THE DESIGNATED ATC SURVEILLANCE MINIMUM ALTITUDE AREA
The minimum altitude to be allocated by the approach surveillance controller will be either the Minimum Sector Altitude, or **1000** above any fixed obstacles:

- a) within 5NM of the aircraft*, and
- b) within the sector 15NM ahead of and within 20° either side of the aircraft's track*.

*When the aircraft is within 15NM of the radar antennae, the 5NM in a) and the 15NM in b) may be reduced to 3NM and 10NM respectively.

LOSS OF COMMUNICATION PROCEDURES
Initial Approach
Continue visually or by means of an appropriate approved final approach aid. If not possible proceed at **5600**, or last assigned level if higher, to **VOR INS†**.
Intermediate and Final Approach
Continue visually or by means of an appropriate final approach aid. If not possible follow the Missed Approach Procedure to **VOR INS†**.
†In all cases where the aircraft returns to the holding facility the procedure to be adopted is the Radio Failure Procedure detailed at ENR 1.1.3.

- GENERAL INFORMATION**
- 1. Levels shown are based on QNH.
 - 2. Only significant obstacles and dominant spot heights are shown.
 - 3. The minimum levels shown within the ATC Surveillance Minimum Altitude Area are in conformance with the Standard European Rules of the Air - SERA.5015.
 - 4. Minimum Sector Altitudes are based on obstacles and spot heights within 25NM of the Aerodrome Reference Point.
 - 5. Controlled airspace with a base in excess of **5000** or FL55, as appropriate, is not shown.
 - 6. This chart may only be used for cross-checking of altitudes assigned when in receipt of an ATC Surveillance service.